

\$10,000

welcome
home
offer

Terms & Conditions Apply



5 Upham Way

AMBERLEY

Price by negotiation

LAND SIZE

828 m²

FLOOR AREA

170.1 m²



4+1



2



2

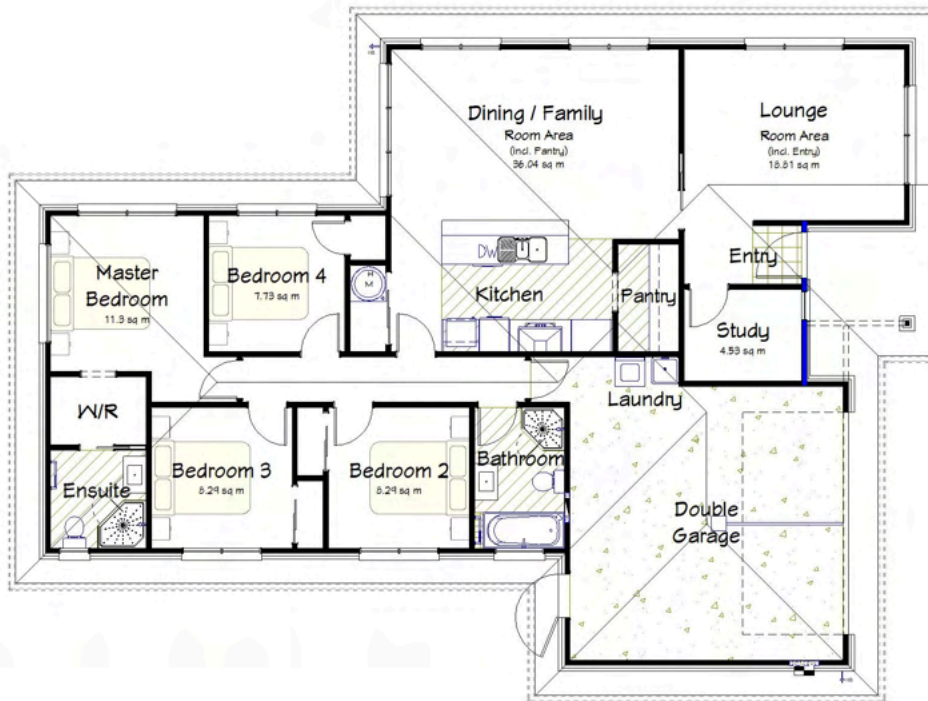


2

Visit goldenhomes.co.nz for our entire range of Home & Land Packages



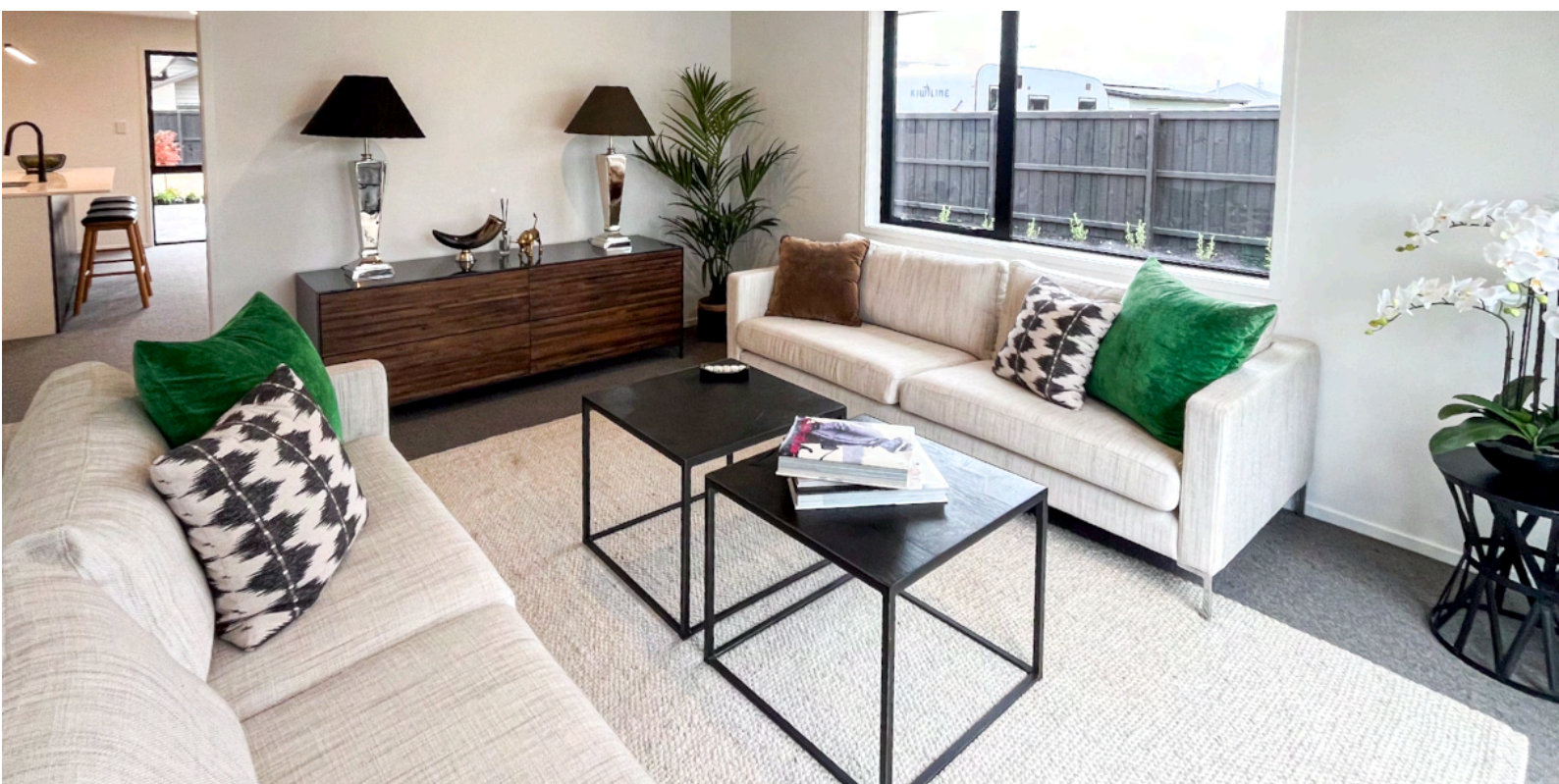
GOLDEN
HOMES®



Welcome to 5 Upham Way—a freshly built 2025 home where the beauty of Amberley and North Canterbury is right at your doorstep. Designed for modern living and crafted to Golden Homes' uncompromising standard, this is a home that blends comfort, style, and practicality in all the right ways. It's brand new, move-in ready, and not to be missed.

Interior

- Bremworth Kensho 100% wool, extra heavy loop pile carpet with 11mm Elite underlay
- Possitano Sand 600x600 floor tiles in the entry, kitchen, pantry, and hot water cupboard
- Schlage Latitude matte black door hardware. Front entry door is a Schlage Touch FE695 electronic keypad.
- Walls, ceilings, skirting, doors, and architraves are all finished in Resene Alabaster
- 6.8kW Mitsubishi Heatpump



Kitchen

- Benchtops in both the kitchen and pantry are Tristone in 'Milk Grotto'
- Bestwood Melamine, 2.3m high cabinetry in 'Arctic White'
- Bestwood Melamine 'Charred Oak' feature panel on the kitchen island
- Soft-close drawers and doors with non-slip mats included. Under-sink bin.
- Methven Minimalist MK2 pull-down sink mixer in matte black
- Lazio 1 and ½ sink bowl with drainer tray
- Fisher & Paykel Oven, Waste-Disposal, Induction Hob, Dishwasher and Rangehood



Bedrooms

- Built-in wardrobes are fitted with Ezirobe Design shelving by Mallia
- Master walk-in wardrobe has a fully custom fit-out complete with LED strip lighting under the shelf unit.



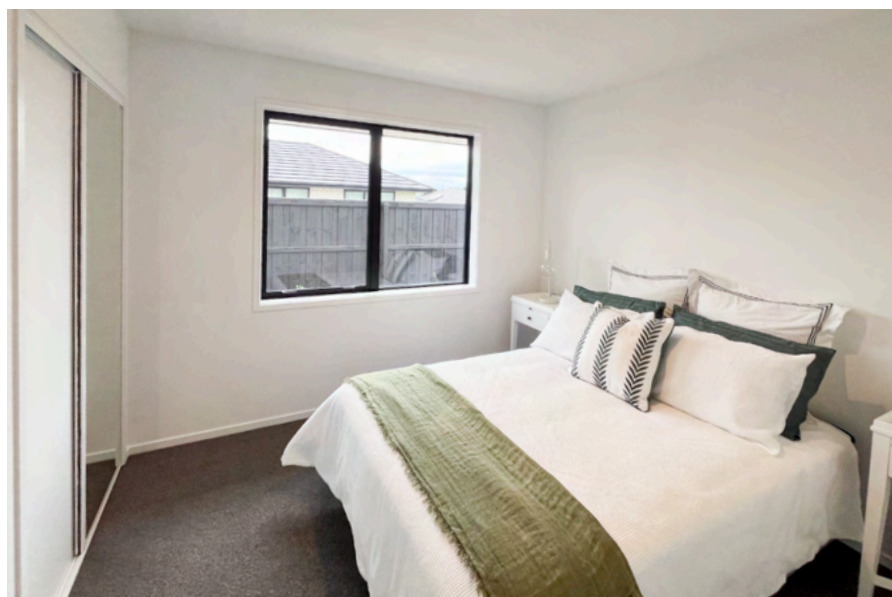
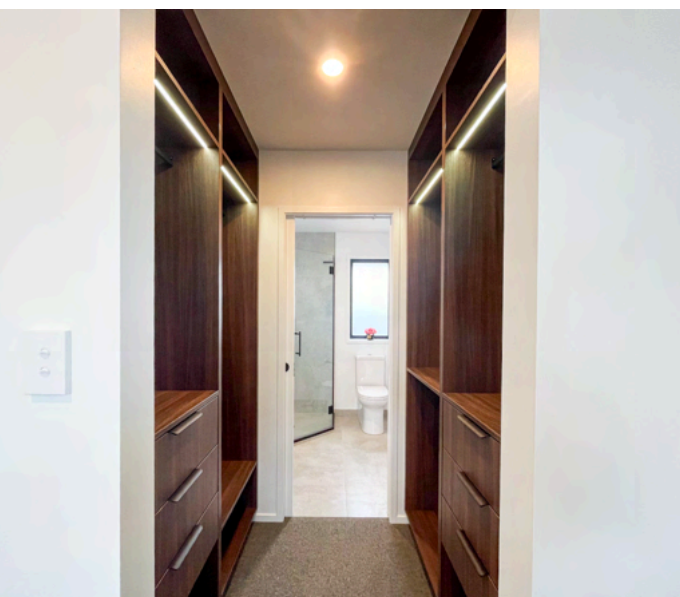
Bathroom & Ensuite

- Roden Perla 600x600 tiled showers
- Methven black matte tap-ware
- Wall-hung porcelain top vanity in 'Charred Oak'
- Tiles above the vanity
- Sphere Easy Height rimless toilets with soft-close seat
- LED mirror with demister heat pads
- 7 bar square towel rail
- Etchlite privacy glass



Exterior

- Midland 'Blanco' Brick with white mortar
- Linea board painted in 'Ebony'
- Aluminium front door with Etchlite glass
- Dominator Montana 2.1m garage door with insulation, in 'Ebony'
- Shake Satin tile roof in 'Ebony'
- Matt Black window and door joinery



Open Homes

Visit our team at this home, Saturday or Sundays 10am – 11am

Contact our team 0800 22 22 36 | christchurch@goldenhomes.co.nz