

MOMENTUM

WAIKATO
Te Puaawaitanga o Waikato

Annual Report 2021

A Better
Waikato For
Everyone,
Forever



“To accomplish great things we must not only act, but also dream; not only plan, but also believe.”

Anatole France

Momentum Waikato Community Foundation
PO Box 9283, Hamilton, 3204
Waikato, New Zealand

07 834 0404
info@momentumwaikato.nz
NZ Charity Commission # CC49535



He taonga rongonui te aroha ki te tangata

Goodwill to other people is a precious treasure



Contents

Chair & Chief Executive Report	2
Waikato Regional Theatre	6
The Greatest Needs Appeal & pandemic relief	7
Houchen Retreat & Here 2 help U	7
Waikato Community Rugby Fund	8
Te Awamutu College Foundation Fund	8
Kimihia Lakes & Huntly Karioi Trusts	9
Bunny Mortimer	9
Waikato Women's Fund	10
Waikato Intercultural Fund	11
Financial Report 2021	12
Metrics 2020-2021	13
Showcase 2021	Back Cover

Chair & Chief Executive Report

The year 2021 was a watershed for Momentum Waikato.

As an organisation, we asked ourselves ever sharper and harder questions on how we can achieve our vision of 'A Better Waikato For Everyone, Forever'.

We live in a world that, for all its goodness, is increasingly unequal, unstable, and unsustainable. Central and local governments in New Zealand are struggling to meet their traditional responsibilities to their citizens, especially those most in need, while having to address a new range of emerging responsibilities, such as our community response to climate change.

The answers to the housing crisis, climate change, social inequality and realising our Treaty of Waitangi responsibilities have been known for some time. However, it seems that neither the market nor the government of any colour have sufficient mandate, capacity or the will and drive to move the legislative, budgetary and policy settings in the direction that will realise those answers.

But philanthropy can deliver solutions in that critical gap between the state and the market, if enabled by a community leadership agency that focuses on strategic outcomes and acts nimbly in moving to achieve them.

The Momentum regional endowment fund built by the generosity of the people of this region is an elegant and appropriate solution when matched with development, partnerships and delivery models that are agile, credible and effective.

To the end of the 2021 financial year we had grown the endowment portfolio to \$33.8m, up from \$30.5m in 2020. We have grown our donor database and established 11 funds and bequests, with more in the pipeline, and distributed to 66 causes from 195 individual donors.

We welcomed Tim Macindoe aboard as our 'Ambassador' in February 2021, to help accelerate the growth in the number of funds and bequests committed to the regional endowment in our care.

Whilst we are proud of these results, the success of Momentum Waikato is not measured in the short term. Endowment funds are by their very nature a long-term undertaking, designed to deliver in perpetuity.

The organisational diagrams over the next couple of pages lay out our strategic goals and explain how we are achieving them. The 'How We Work' graphics over the page outline the project processes that both deliver real change in themselves and drive our ever-expanding ongoing cycle of growing community capacity.

Momentum Waikato is well placed to work with others to support and fund the new community innovations, to validate what is effective and then build the compelling case for government, corporates and philanthropists to invest, as we are independent and comfortable with the challenge of diverse and complex partnerships.

Our switch to an 'Impact Investment' financing model moves us away from traditional one-dimensional grant-making funded by siloed stock-market income – instead we are moving to use our capital itself to leverage the power of the market to create positive change.

For Momentum, impact investing means the investment of capital to generate a measurable social and/or environmental impact, as well as providing a monetary return. Quite a step from just recycling the principal to a risk-adjusted market rate return.

Momentum Waikato is now utilising an Impact Investment methodology as we set out to deliver housing and integrated wellness centres throughout our region. We appointed Steve Gow as our

Neil Richardson
Chair



Kelvyn Eglinton
Chief Executive



Projects Director in March 2021 to lead these initiatives and assist our partners in delivering homes where people can raise families, be secure and have a sense of place.

The Houchen Retreat in Glenview, which was gifted to us by the Houchen Charitable Trust, is being transformed into a wellness hub in partnership with Wise Group. A co-design process identified several key services and wellness opportunities that can be delivered from the re-developed centre. The connection of philanthropic gifting, investment and commercial partnering to deliver programmes, including Mama Peepee respite, will be an exemplar model for developing service centres relevant to local communities across the region.

Our 'Connect and Convene' ethos also means we are able to join together like-minded agencies and people with relevant resources and expertise to add leverage to projects, as witnessed in our role assisting the development at Kimihia Lakes and the development of new Funds supporting activities as diverse as conservation, community rugby and social enterprise.

What's critical is how we provide new models of delivery, that create positive community outcomes in our top three priority focus areas – reliable home tenure, wellness and connectivity in the community, and development pathways for young people.

It starts now, with you and me, and with the great spirit of generosity that defines the mighty Waikato.

That is our 100-year game plan, join us as we strive to make it all a reality.

Momentum Waikato Trustees 2020 - 2021



Joan Forret



Alan Livingston



Simon Rickman



Pam Roa



Holly Snape



Ken Stephens

A BETTER WAIKATO FOR EVERYONE, FOREVER

2020 - 2025 STRATEGY

LEADERSHIP • LEARNINGS • LEVERAGE

RELATIONSHIPS, SKILLS & CAPITAL

A REGIONAL ENDOWMENT \$300M IN 30 YEARS

A culture of giving | Make giving easy
A generous Waikato

MEASURES

Community and Iwi partnerships
Funds under management = \$80m
Impact project pipeline value = \$250m
Bequests/funds in pipeline = 100
Payroll giving = 25 businesses
Vital Signs - Impact grant

TRANSFORMATIONAL PROJECTS

Community leadership | Measurable investment
A healthy Waikato

PROJECTS MODEL

CONNECT AND CONVENE

Donors wishes, community leadership,
partnerships

CONCEIVE

Problems defined / Opportunities evaluated

CONSTRUCT AND COMPLETE

Project direction and structures, administration

LEVERAGING

Resources, skills, networks, replicable at scale

HOW WE WORK



Leadership

1. Challenge
2. Conceive
3. Communicate



Partnership

4. Collaborate
5. Co-create
6. Champion



COMMUNITY PROJECTS

10. Complete
11. Celebrate
12. Commence



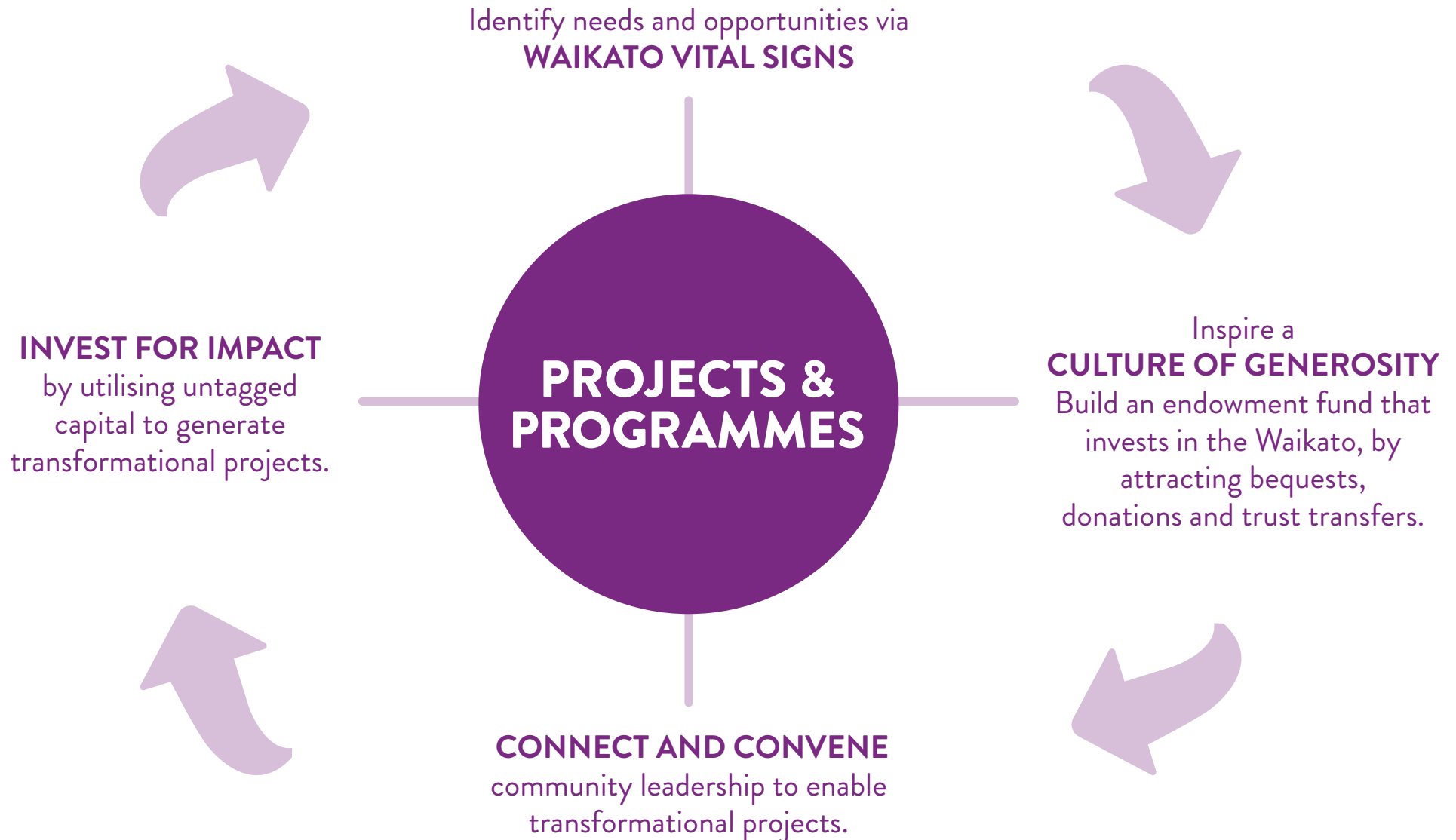
Reputation



Results

7. Capitalise
8. Contract
9. Create/Construct

WE ACHIEVE THIS BY...



Waikato Regional Theatre

Build underway after challenges overcome

The Waikato Regional Theatre finally moved off the drawing board with the start of site work in mid-2021.

As reported in last year's Annual Report, Prime Minister Jacinda Ardern's announcement of Provincial Growth Fund support in November 2019 completed the project's initial planning and partnership-building phase, pressing the 'Go' button on making it happen.

However, the combination of the pandemic arriving in March 2020 and extra steps in the consent processes then slowed progress through the rest of that year.

The single largest issue was protection of the Hua o te Atua urupaa adjacent to the theatre site, which led to an Environment Court process.

Early on, Momentum Waikato and the Waikato Regional Property Trust, recognising that the Theatre is for everyone in the community so should alienate no-one, made the appropriate decision of moving its footprint a further eight meters away from the recognised area of the urupaa.

This shift addressed the concerns of Te Haa O te Whenua o Kirikiriroa (THaWK), the group representing the city's mana whenua hapuu, who have been supportive of the Theatre project throughout.

However, although there was wide agreement this move had addressed the substantive concern, THaWK's authority to grant this clearance was then appealed by other hapuu members. The Environment Court eventually ruled in December 2020 that the Theatre's case was not a vehicle for determining mandate in consenting processes and that there should be hui to resolve the issue of who represented the mana whenua in these settings. All parties agreed in court on the site-specific questions, allowing the project to proceed.

Contract negotiations between the Waikato Regional Property Trust and Fosters Construction were then able to get fully underway. The court process and Covid-related supply chain issues meant costings had increased since the project's original budget, which meant these talks also took longer than initially anticipated.

The construction contract was finally signed in July 2021, and work on site got underway soon after. By the end of the year, all the modern buildings had been cleared away and the careful stripping of the heritage Hamilton Hotel was well advanced.

The Waikato Regional Theatre fundraising campaign was delighted to receive several major new pledges in 2021. Momentum Waikato and the Waikato Regional Property Trust heartily thank the Sir William and Lady Judi Gallagher Foundation, the Porter Group, the NAR Foundation and the WEL Energy Trust for their significant financial support.

The Prime Minister returned to the Theatre site in November 2021 to perform the official Sod Turning, a ceremony which had twice been postponed by Covid lockdowns. Dignitaries, mana whenua and key supporters enjoyed a momentous formal launch for the Theatre, unphased by poor weather overhead and rude protesters at the gate.

The Waikato Regional Theatre is now on track to be completed in the first half of 2024. Given the challenges the project has faced, it will be a remarkable achievement when the Waikato has this fantastic new venue to call its own, a place where 'we will meet again'.



Photo: Mike Walen.



Photo: Fosters.



Image: Jasmex.

The Greatest Needs Appeal & pandemic relief

Flexible response to changing Covid challenges

The Greatest Needs Appeal was first launched in March 2020 as Momentum Waikato's immediate response to the arrival of the Covid-19 pandemic.

The Houchen and 'Here to help u' projects described elsewhere in this Annual Report were part of Momentum's role as the flexible component of the Waikato Community Funders Group, which also included providing the public-facing function of the Appeal.

Momentum played its 'connect and convene' role as a community leadership foundation, getting the donated funds to effective front-line groups, meaning Greatest Needs Appeal donors could be sure their gifts were reaching the local places where they'd make the most difference.

This initial phase culminated in mid-2020 with the Greatest Needs Appeal being the benefactor for The Mighty Waikato Cookbook project coordinated by Waikato Civil Defence, which saw favourite restaurants donate recipes towards a hugely popular and award-winning fundraising e-cookbook.

Funds from the cookbook and other lockdown initiatives continued to be distributed through 2020. Once the first Level 4 lockdown was over, the emphasis shifted from food to winter essentials like kids' clothes, raincoats, blankets and firewood, which were distributed by front-line community groups like the Good News Community Centre in Hamilton, the Whangamata Community Services Trust and Te Kuiti Community House.

Then in mid-2021, the Greatest Need Appeal ramped up again during the period that the Auckland Lockdown was impacting the communities of the North Waikato.

Working with Community Waikato, Momentum sought and coordinated donations from a combination of business and individual contributors, including a significant donation from Golden Homes, that saw tens of thousands of dollars reach a range of 'community pantries' and other immediate support systems, most on what was then the hard 'Auckland border'.

The front-line organisations welcomed this approach, saying they appreciated being trusted to know how best to spend the money and target the resources, ensuring impact without burdening anyone with excessive admin.

Momentum Waikato primarily exists to build long-term capacity and resilience for the region, but when the local need is immediate, as it has been through Covid, the community foundation has proven itself very able to step up and use its expertise and networks to great effect, for the benefit of the community here and now.



Te Kuiti Community House gave raincoats to kids at Centennial Park School.

Houchen Retreat & Here 2 help U

Collaborations build model wellbeing services

The Houchen Retreat took key steps in its development as a community wellness village through late 2020 and into 2021, while also continuing to be a reliable platform for the region's Covid response.

The attractive campus on the south-western edge of Hamilton was gifted to Momentum Waikato by the Houchen family in 2019, with the Wise Group then taking on its management and development as both tenant and partner.

As reported in last year's Annual Report, the arrival of the pandemic meant the push to turn the former clerical retreat into a wellness facility was initially side-lined by its use as a relief kitchen.

That food operation was the first element in what soon became the 'Here to help u' wellbeing and support service driven by the Wise Group and Community Waikato.

While the local sector's coordinated food relief operation peaked during the 2020 lockdown, when the Claudelands event centre kitchen was at work, Houchen's has continued to cook for those in need across the region, with some five thousand prepared meals having gone out the door to date.

Overall, as of late 2021, 'Here to help u' has supported twenty-five thousand people with a range of wellbeing help and/or food, grown its provider base from sixteen to two hundred, and expanded its footprint from Hamilton and surrounds to South Waikato, Tauranga and Western Bay of Plenty.

The community co-design of the wellness village did pick up pace in the second half of 2020, with its plan report landing in May

2021. That process saw the Wise Group hear local voices, with the call being for opportunities to form social and community connections, whether it be across generations and cultures, or for those facing similar challenges or phases of life.

Programmes now planned for Houchen's include exercise, meditation and Rongoa Maaori sessions, and a garden supporting growing and cooking classes. A Mama Peepee space will be based in the original homestead, which will provide mothers and their babies with a quiet space with nursery and wellbeing support. All are due to be rolled out once renovations are complete.

As a supportive asset manager, Momentum is pleased to see and support the development of Houchen's and intends to use it as a model for the provision of similar wellness villages across the region.



The 'Here 2 help u' team have supported thousands of local people since the start of the pandemic.

Waikato Community Rugby Fund

Resilience at the grassroots

The future of grassroots amateur rugby across the Waikato is significantly more secure thanks to the creation of the Waikato Community Rugby Fund in late 2020.

The Waikato Rugby Union had been looking for ways to diversify the funding streams for community rugby for some years. A significant foundational gift from a generous group of directors and other rugby supporters made it possible to create a named philanthropic investment fund with Momentum Waikato.

The foundation of the public-facing Waikato Community Rugby Fund, initially called The Friends of Waikato Rugby Fund, is also a key part of the WRU's Centenary celebrations.

Waikato Rugby Union CEO Carl Moon said the Waikato Community Rugby Fund gives supporters the opportunity to donate smartly towards the community-level game, and makes the region's local rugby much more resilient against economic shocks.

Chairperson Colin Groves said the WRU Board strongly supported the Fund because of its long-term certainty. In an increasingly competitive environment for contestable, philanthropic and sponsorship income, they felt it important to offer supporters the option of donating towards a properly invested Fund, rather than just towards immediate expenditure.



Te Awamutu College Foundation Fund

Solid support for school and students

Te Awamutu College and its students are the benefactors of a named fund established with Momentum Waikato in late 2020.

The Rogers Charitable Trust, set up in 1995 to support Te Awamutu College and its students, transferred \$50,000 to establish the 'Te Awamutu College Foundation Fund', providing a secure perpetual funding stream that its alumni and families can grow.

While some donors already support scholarships via the community foundation, this is the first such school support initiative invested in the regional endowment.

Principal Tony Membery thanked the Rogers Charitable Trust for its decades of support and the initial gift to launch the Fund.

Craig Yarndley, the Chairperson of Te Awamutu College Board and a Rogers Charitable Trust board member, said previous grants have funded a range of support for the school, from vans and furniture, to property development and scholarships.

Te Awamutu College is currently planning an all-seasons covered multisport-turf field, a wonderful project that everyone in the community can support by making a donation to the Te Awamutu College Foundation Fund – visit momentumwaikato.nz/donate.

Momentum Waikato recognises that strong schools are a foundation for robust communities, so is always keen to help grow financial resources for local kids' and teens' education. The new Te Awamutu College Foundation Fund is a great example of what's possible.

Kimihia Lakes & Huntly Karioi Trusts

Path to the dream now open

The Kimihia Lakes project initiated by Murray and Jennifer Allen at the former Huntly East open cast mine achieved critical legal and resourcing milestones during 2021.

Momentum Waikato first connected with the Allens in 2020, becoming an advisor to their Kimihia Lakes Community Charitable Trust, taking aboard the Huntly Karioi Trust Fund set up to support outdoor education at the new lake, and underwriting the cost of planning required to access the mine's rehabilitation funding.

The escrow money held by Treasury had been collected via a levy on the coal mined over decades from the huge hole north-east of Rahui Pokeka-Huntly and its release required the preparation of a full site rehabilitation plan and commitment.

Through 2021 quantity surveyors Hatch Consulting and technical consultants Boffa Miskell lined up principles, workstreams and costings to chart how the mine's ecological restoration can be achieved.

Criteria satisfied, the escrow release agreement was finally signed with the Government in November, giving the Allens and their project manager Charlie Young a financial launchpad for the rehabilitation, and realising the goal of Momentum's initial bridging underwrite.

The other challenging prerequisite facing the team through the year was securing the re-zoning of the former mine site in the local District Plan, so it can be used for outdoor education and recreation and associated service facilities can be built. Preparations for the key Waikato District Council hearing in September needed to answer a huge range of issues, from roading, to hazards, to three waters. The effort paid off, with the new zoning come through at the start of 2022.

Even while these huge opening hurdles were being cleared, community collaborations were already getting underway at the new lake. An MOU was signed with the Te Whangai Trust, a work and life skills enterprise, to develop a tree and plant nursery on site, with its spot identified soon after and their students then starting work.

An MOU was also signed with Wintec to facilitate Kimihia hosting a wide range of their applied programs. Trainee arborists were the first on site, clearing pines before the rising lake level reaches them, and producing mulch for the new nursery, a win-win synergy all round.

Momentum is proud to support the Kimihia Lakes Project and to manage the Huntly Karioi Fund, a great example of how its 'connect and convene' role can enable and accelerate exciting philanthropic and community initiatives.

Bunny Mortimer

Taitua founders leave leafy legacy

Bunny Mortimer was a quiet and modest achiever who left a wonderful ever-growing legacy for Hamilton and the Waikato.

The determined tree conservationist passed away in May 2021 at the age of 97. She and her late husband John created the Taitua Arboretum over many decades, eventually gifting the leafy haven to the city of Hamilton, for the perpetual enjoyment of the public.

Bunny and John were also founding donors to Momentum Waikato, entrusting their Taitua endowment fund to its care, to support the Arboretum forever.

Momentum's founding Chair Ken Williamson paid tribute to Bunny and John - Kua hinga te tōtara i Te Waonui a Tāne, two great totara have fallen, but the forest remains, forever.

The Taitua Fund continues to accept donations to fund the Taitua Arboretum, growing the legacy so generously established



The late Bunny and John Mortimer at Taitua Arboretum in 2015.

Waikato Women's Fund

Ambitions pursued in disrupted year

Like us all, the Waikato Women's Fund-Te Ira Waahine o Waikato committee had to navigate the choppy waters of the Covid pandemic during 2021, with the stop-go-stop-go year meaning some great plans didn't quite come to fruition.

The purpose of the volunteer-led Women's Fund is to enable the region's women and girls to achieve their dreams and aspirations, by growing a philanthropic investment fund, making grants from its income, and driving activities that showcase feminine mana, drive and beauty.

The Fund's balance continued to grow, reaching \$154,400 by the end of the financial year in June 2021, a marker on its mission to raise \$1 million by mid-2024.

Waahine Toa-Reignite, the Women's Fund annual signature fundraising event, did successfully take place. A sold-out High Tea at the wonderful Zealong Tea Estate near Gordonton was held on Saturday 13 March 2021.

Four inspirational speakers - Amanda Betts, Golriz Ghahraman, Jo Shortland and Rachel Petero - shared their wisdom and empowering stories. Supported by Zealong, Tompkins Wake, Duncan & Ebbett, Hamilton Volvo, Craigs Investment Partners and Haha Wine, the wonderful day raised just under \$24,000.

The Women's Fund's Annual Planning Day took place in May, but the timeline then charted out was disrupted by the subsequent lockdowns. Most notably the Fund's Third Birthday event scheduled for mid-August couldn't happen - which just means the Fourth Birthday will be huge!

The Fund's grant-making focus for 2021 was 'Leadership and Wellbeing Resilience'. Following a robust membership nomination and voting process, two grants of \$5000 each were made to the Flourish Leadership Development for Ethnic Women programme run by the Hamilton Multicultural Services Trust, and Te Hinatore run by Anglican Action.

+ WAIKATO
**Women's
Fund**
Te Ira Waahine o Waikato

This year's grant-making round was notable for the markedly increased involvement of the wider Women's Fund membership, with more nominations and votes than ever before.

A new larger committee was elected at the Fund's Annual Membership Meeting at the end of 2021, which also re-elected Rachel Afeaki-Taumoepeau as its Chair.

The Fund's committee offers particular thanks to Momentum Waikato, the University of Waikato, Volunteering Waikato, the DV Bryant Trust, all of which provided tangible support in 2021.

The Waikato Women's Fund is ambitious as it pushes on into 2022, building its resources and capacity to support the women and girls of the region.

The call to action to all Waahine Toa of the Waikato is to support the Waikato Women's Fund in whatever way you can, let's share our stories and celebrate our goodness.



The Waikato Women's Fund committee in late 2021.

Waikato Intercultural Fund

Developing the formula

The Waikato Intercultural Fund steadily developed into a volunteer-driven entity through 2020 and 2021, with its leadership team forming and its mission and strategy being defined and tested.

Initially called the 'Waikato Cultural Inclusion Fund', the project was launched by Momentum Waikato CEO Kelvyn Eglinton in March 2019 after his discussions with local groups on the need for cultural bridge-building were brought to a head by the Christchurch terrorist attack.

The question asked then was 'what can Momentum do, with its tools, to build understanding and fellowship between the cultures of the Waikato, to both grow and share prosperity together and prevent such terrible violence from ever happening again?'

The Fund was set up as a Giving Circle, requiring a group of keen volunteers to drive it, as per the Waikato Women's Fund. Development work by Jenny Nand and Mark Servian, including community engagement sessions, led to a Fund Charter being put together by a working group during the mid-2020 lockdown.

This founding document was then the basis for recruiting the Fund's Establishment Committee, which held its first meeting at Momentum's office in August 2020.

The first decision of this new group, chaired by Jannat Maqbool, was to adopt the title 'Waikato Intercultural Fund', as it more accurately reflected the ethos and vision of the agreed Charter.

Interculturalism recognises that fostering the synergies of diverse cultures creates resilient, flourishing communities. It builds beyond multiculturalism by asserting that all cultures in a society are of equal and equitable value, that individuals may

embody more than one culture, and that peace, understanding, mutual respect and reciprocity across and between cultures grow from pursuing and celebrating dialogue and diversity in every aspect of life.

Over the following months the team's focus was on investigating how this vision could manifest as a mission, including via a community workshop at Ruakura in November 2020.

An opportunity was then taken in early 2021 to try out some 'intercultural activities' via a collaboration with The University of Waikato School of Management, coordinated by then-WIF team member Andrea Perry. Their public relations students hosted a series of fun events across Kirikiriroa Hamilton in May and June, including a quiz night, craft and photography exhibitions and outside games. There was a variable turn-out, but all the gatherings provided valuable insights into how the intercultural message could land with the public.

Meanwhile brand development discussions with Pan Media led

to an innovative concept with real potential for impact, but in doing so showed up the need to more tightly define the Fund's strategic and membership parameters.

This work began with a team workshop in July 2021, with the resulting Mission and Strategy formally adopted in September, and the new brand concept signed off soon after.

The Fund's establishment phase culminated with a foundational AGM in November 2021, at which Jannat as Establishment Chair presented the whole package of mission, strategy and brand. A video call of thirty-odd people from a range of community organisations agreed by consensus to support the propositions, and to elect the current members of the Establishment Committee as the Fund's inaugural Board.

The WIF team now believes it has the concept to address the question posed above in 2019 - it knows what it wants to do and is now working out how it is going to do it. Watch this space!



Photo: Mark Servian.

The Waikato Intercultural Fund committee in July 2021.

Consolidated Annual Financial Report 2020-2021

CONSOLIDATED FINANCIAL PERFORMANCE

REVENUE

	2021	2020
Donations	\$2,199,015	\$15,693,266
Sponsorship	\$2,897	\$2,437
Other	\$49,955	\$656,584
Net finance income	\$648,103	\$492,599
Total	\$2,899,970	\$16,844,886

Note: 2020 financial performance included a major trust transfer, which are recorded as donations in our annual financial statements.

EXPENSES

	2021	2020
Public Fundraising	\$402,621	\$591,399
Volunteer & Employee	\$652,689	\$567,640
Grants & Donations	\$2,502,652	\$3,381,156
Other	\$143,325	\$59,658
Total	\$3,701,287	\$4,599,853
Surplus/(Deficit)	(\$801,317)	\$12,245,033
Gain on investment revaluations	\$3,134,980	\$1,561,143
Total comprehensive income	\$2,333,663	\$13,806,176

Full audited financial statements available on request.
This publication was designed by PAN Media.

CONSOLIDATED FINANCIAL POSITION

ASSETS

	2021	2020
Cash, cash equivalents & prepayments	\$180,613	\$656,229
Investments	\$31,842,525	\$28,055,350
Property, plant & equipment	\$1,833,329	\$1,843,728
Total	\$33,856,467	\$30,555,307

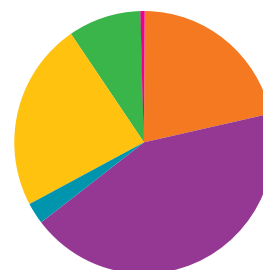
LIABILITIES

	2021	2020
Current payables	\$1,258,174	\$309,957
WEL Energy Trust loan	\$293,188	\$274,008
Total	\$1,551,362	\$583,965
Net assets	\$32,305,105	\$29,971,342

INVESTMENT FUNDS

Investment funds held at 30 June 2021

NZ Bonds	21.47%
Listed Shares	43.14%
Property	2.66%
PIE Cash Funds	23.19%
Short Term Deposits	9.07%
Loans Receivable	0.47%



2022 INVESTMENT TARGET
\$45,000,000

KEY PARTNERS

Services in-kind received to 30 June 2021

WEL Energy Trust	Founding partner
Trust Waikato	Waikato Regional Theatre partner
D.V. Bryant Trust	Office premises
Forsyth Barr	Investment services
Craigs Investment Partners	Investment services
Cooper Aitken	Accounting
Tompkins Wake Lawyers	Legal services
Ebbett Group	Vehicle
IT Partners	Office IT
Lightwire	Network and connectivity services
GravityLab	Database services
PAN Media	Web, marketing and graphic design
Print House	Printing
Mark Hamilton	Photography
H3	Venues and event tickets

Annual Metrics 2020-21

DONATIONS RECEIVED*

\$37,872,313

Cumulative Total 2014-2021



*Pass through and Endowment.

\$3,018,374
(2020-2021)

PLEDGED GIFTS-IN-WILLS

8

Cumulative Total 2014-2021



No new pledges received in 2020-2021

GRANTS MADE

203

Cumulative Total 2014-2021



(2020-2021)

DONORS

990

Cumulative Total 2014-2021

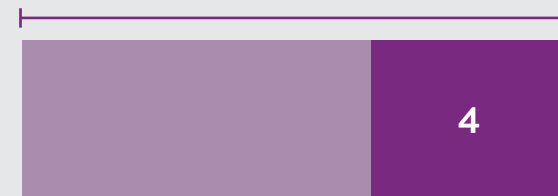


(2020-2021)

NAMED FUNDS

11

Cumulative Total 2014-2021



(2020-2021)

A BETTER WAIKATO FOR EVERYONE, FOREVER

MOMENTUM
WAIKATO
Te Puaawaitanga o Waikato



momentumwaikato.nz

To start a conversation about how you
can create the greatest impact with your
generosity, contact us on 07 834 0404
or info@momentumwaikato.nz

*Momentum Waikato held a Showcase at Claudelands in March 2021,
was a great opportunity to update supporters on new Funds and projects.*