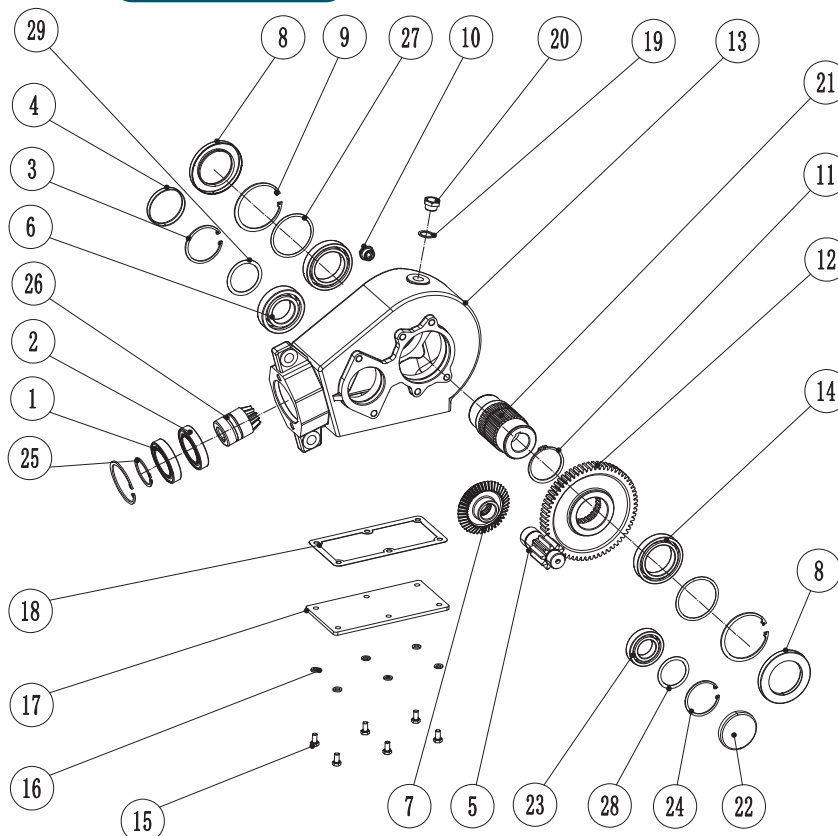




CMR

Code: H200/45



1	bearing 6010-2RS1	CBR60102RS01	1	18	gasket	G55501018000	1
2	bearing 6010	CBR601000001	1	19	gasket 1/2	CWA000000006	1
3	circlips for holes 80 (t2.5)	CSR800000001	2	20	oil plug G1/2"	COP000000007	1
4	seal ø80x10	COSD800000005	1	21	shaft ø45	G5550302100M	1
5	gear sahft	G5550100500M	1	22	seal ø72x10	COSD720000003	1
6	bearing 6307	CBR630700001	1	23	bearing 6306	CBR630600001	1
7	gear	G5550100700M	1	24	circlips for holes 72 (t2.5)	CSR720000001	1
8	seal ø100x ø65x10	COSD100000001	2	25	circlips for shafts 50 (t2)	CSR500000001	1
9	circlips for holes 100 (t3)	CSR100000001	2	26	gear	G5550102800M	1
10	oil level G1/2	COP000000006	1	27	spacer tube ø85xø100x0.2	CWAD100000001	
11	circlips for shafts 72 (t2.5)	CSR720000002	1	27	spacer tube ø85xø100x0.5	CWAD100000002	
12	gear	G5550101200M	1	28	spacer tube ø62xø72x0.2	CWAD720000002	
13	housing	G5550101300M	1	28	spacer tube ø62xø72x0.5	CWAD720000003	
14	bearing 6013	CBR601300001	2	28	spacer tube ø62xø72x0.1	CWAD720000004	
15	hexagon bolt M8x16	CSCM08016002	6	29	spacer tube ø79.8xø70x0.2	CWAD800000001	
16	washer 8	CWAD080000001	6	29	spacer tube ø79.8xø70x0.5	CWAD800000002	
17	cover	G5550101700M	1				