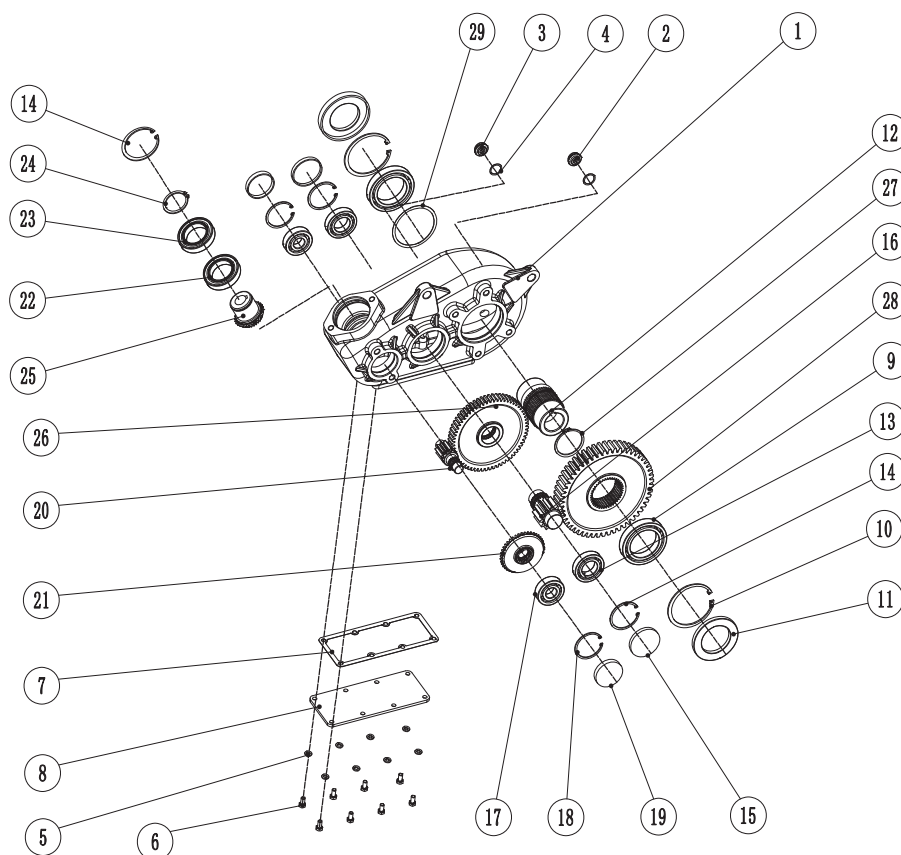




CMR

Code: H300/45



1	housing	G5030100100M	1
2	oil level G1/2	COP000000006	1
3	oil plug G1/2"	COP000000007	1
4	gasket G1/2	CWA000000009	2
5	gasket GB/T95 8	CWAD080000001	8
6	hexagon bolt M8x16	CSCM08016002	8
7	seal gasket	G50301007000	1
8	cover	G5030100800M	1
9	bearing 6013	CBR601300001	2
10	Circlips for holes 100	CSRD100000002	2
11	seal $\phi 100 \times \phi 65 \times 10$	COSD100000001	2
12	exit shaft $\phi 45$	G5030301200M	1
13	bearing 6208	CBR620800001	2
14	Circlips for holes 80	CSRD800000001	3
15	oil seal $\phi 80 \times 10$	COSD800000005	2
16	gear shaft	G5030101600M	1

17	bearing 6305	CBR630500001	2
18	Circlips for holes 62	CSRD620000001	2
19	oil seal $\phi 62 \times 10$	COSD620000003	2
20	gear shaft	G5030102000M	1
21	gear	G5030102100M	1
22	bearing 6010	CBR601000001	1
23	bearing 6010-2RS	CBR60102RS01	1
24	Circlips for shafts 50	CSRD500000001	1
25	gear	G5030102500M	1
26	gear	G5030102600M	1
27	Circlips for shafts 72	CSRD720000001	1
28	gear	G5030102800M	1
29	spacer tube $\phi 65 \times \phi 75 \times 0.2$	CWAD750000003	
29	spacer tube $\phi 65 \times \phi 75 \times 0.1$	CWAD750000002	
29	spacer tube $\phi 65 \times \phi 75 \times 0.5$	CWAD750000004	